

**Maintenance-free
Diaphragm valve
lined
and
unlined**

**with flanges
PN 10
DN 15 - 200**

Fields of application

- industrial applications
- power plants
- general industries
- chemical and industrial process engineering

Suitable for abrasive and aggressive products such as water, drainwater, acids, caustic solution, sludge and suspension.

Operating data

- operating temperature range from -10°C up to +140°C
- operating pressure range from vacuum up to 10 bar

Design

Soft sealing diaphragm valve, straight through type. Sealing in the passage and towards the outside by a diaphragm. Position indicator with integrated stem protection. DN 125 - 200 with threaded bush.

Specifications

valve	-manufactured and tested -designated	DIN 3359 DIN/EN 19(ISO 5209)
flange	-dimensions - surface	DIN/EN 1092-2 (BS 4504) DIN/EN 1092-2 Form A
Other flange designs available on request.		
face-to-face length		EN 558-1 R7 (ISO 575217) (BS 5156)

Materials

Body	grey cast iron JL-1040	GJL-250
Bonnet	grey cast iron JL-1040	GJL-250
Stem	stainless steel 1.4104	
Diaphragm	IIR	+120°C
Screws	steel	5.6A2E
Handwheel	steel	St14 1.0338

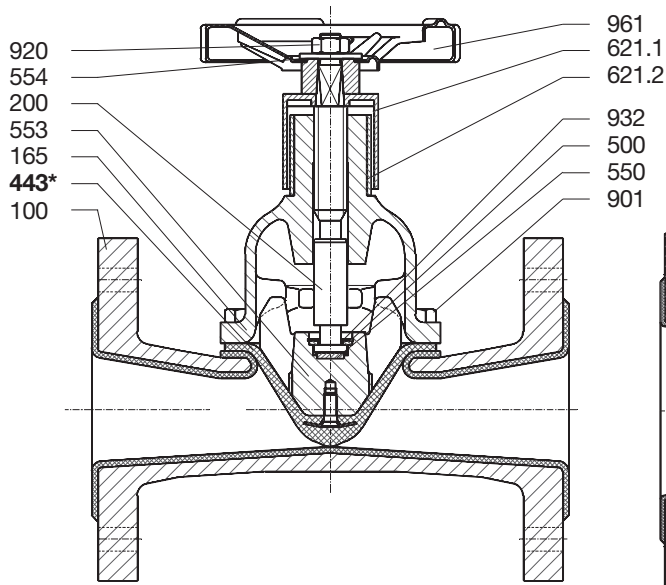
Variants

Body	nodular cast iron JS-1025	GJS-400-18-LT
	stainless steel (only DN 50/80/100/150)	1.4408
Body Coating	NR-H	Ebonite +100°C
	IIR	Butyl +120°C
Body Lining	PA	Riilsan +90°C
	ECTFE	Halar +120°C
Diaphragm Material	EPDM	+140°C
	NBR	+90°C
	CSM	+100°C
Bonnet	nodular cast iron JS-1025	GJS-400-18LT
Other materials on request		

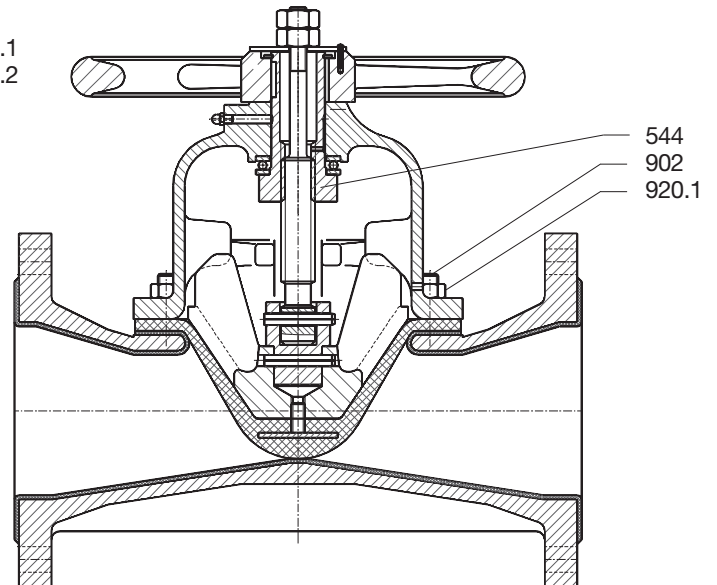
These data are given as a guide only and do not apply to all operating conditions.

On all inquiries / orders please specify

- 1 - type
- 2 - PN
- 3 - DN
- 4 - working pressure
- 5 - differential pressure
- 6 - operating pressure
- 7 - medium
- 8 - pipe connection
- 9 - variants
- 10 - certificate
- 11 - type series booklet- number



design DN 015-100


 design as variant DN 125 - 200
 DN 015 - 100

Item no.	Designation	Material	Note
100	body	JL-1040/NRH	standard
165	bonnet	JL-1040	standard
200	stem	1.4104	
443*	diaphragm	IIR	standard
500	disc	St A2E	
544	threaded bush	JS-1025	on DN 125 - 200
553	compressor	JL-1040	
554	disc	St A2E	on DN 015 - 100
550	disc	PTFE	
621.1	upper opening indicator	ABS Luran	
621.2	lower opening indicator	ABS Luran	
901	hexagon nut	8.8 A2E	
902	stud	5.6 A2E	on DN 100 - 200
920	hexagon nut	A2-70	
920.1	hexagon nut	A2-70	on DN 100 - 200
932	circlip	springsteel	
961	handwheel	St14	DN 015 - 020 ABS / DN 125 - 200 JL-1040

***recommended spare part**

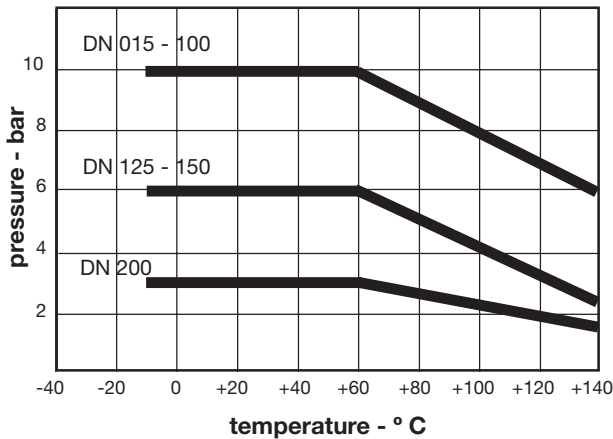
Operating instructions

0570.821

material limitations

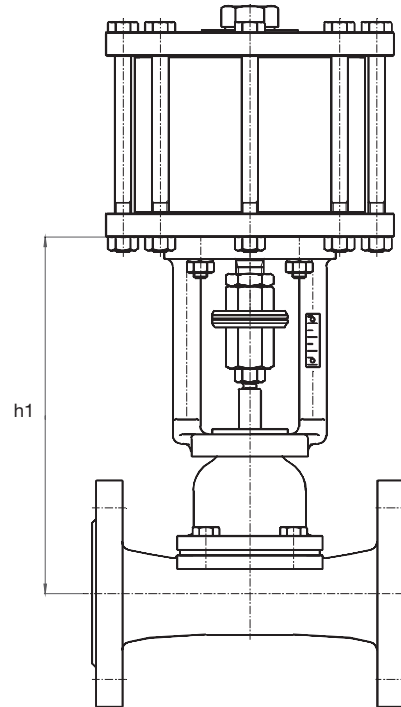
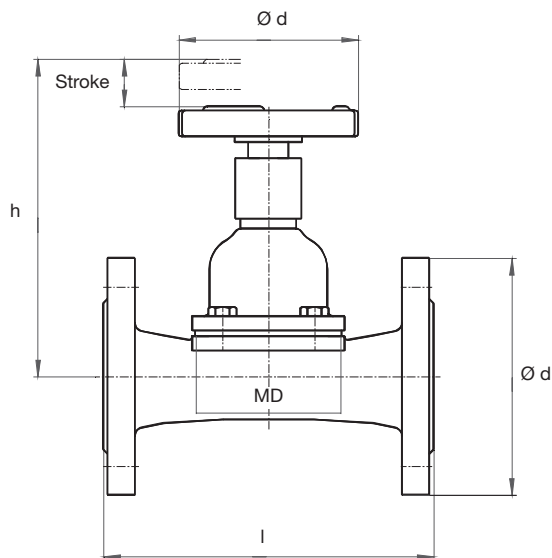
data sheet

8630.165

max. permissible operating pressure

flow values

DN	Kv-value m ³ /h	DN	Kv-value m ³ /h
015	6,8	065	166
020	11,5	080	227
025	26,0	100	410
032	36,0	125	616
040	57,0	150	1080
050	90,0	200	1879

There is no need to reduce the max. permissible operating pressure in relation to temperature and valve size.
The temperature limit is determined by the applied material.



nominal size DIN	diaphragm MD Ø AxB	face-to-face length l	flange DIN Ø D	valve stroke	manual valves				actuated valves	
					height *h	handwheel Ø d	handwheel turns approx.	weight kg	height *h1	actuator flanges
015	70 x 46	108	95	9	93	63	3	2,0	216	F10
020	70 x 46	117	105							
025	86 x 67	127	115							
032	86 x 67	146	140							
040	86 x 67	159	150							
050	111 x 86	190	165	33	220	125	8	10,3	300	
065	136 x108	216	185	45	280	200	11	16,0	337	F10
080	169 x134	254	200	46	320					
100	Ø 198	305	220	59	370	250	15	26,5	382	F10/F14
125	Ø 230	356	250	73	360					
150	Ø 285	406	285	95	440	400	19	75,0	511	F10/F14
200	Ø 337	521	340	114	560					

SISTOMAT-P
SISTOMAT-E-MATE/-LAE
SISTOMAT PC

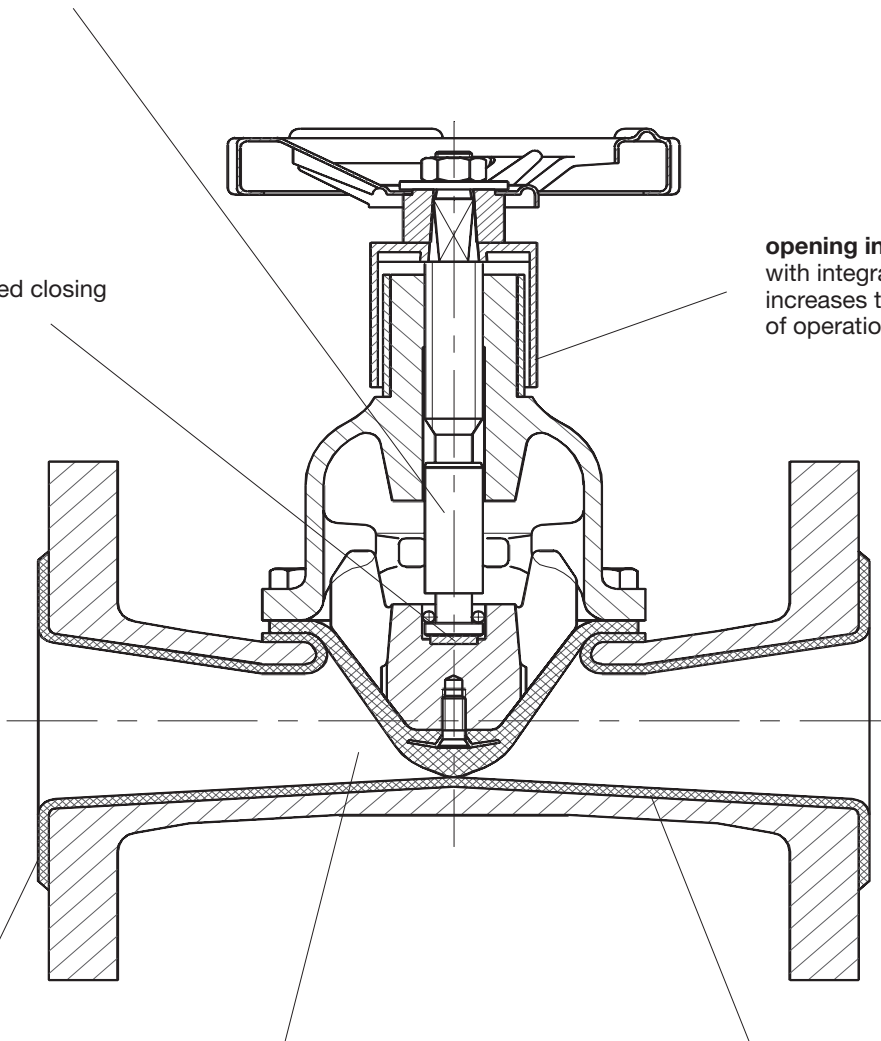
type series booklet 9210.1
on request
type series booklet 8651.1 PC

all dimensions in mm
with rubber lining add. 5 mm

all moving parts
are separated from the
medium by the diaphragm

thrust bearing
reduces the required closing
torques

opening indicator
with integrated stem protection
increases the reliability
of operation



body lining
up to the flange area

hydrodynamic body shape
low flow drag,
no entrapment areas,
no sediments

body on request
- without lining
- with rubber lining
- with plastic coating